

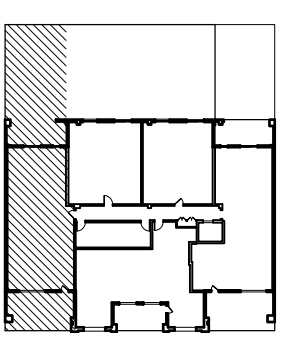
TERRACE SUITE 203



Plans are artist's renderings. Dimensions are approximate and should not be used as precise measurements in establishing value

FRONT TERRACE
REAR TERRACE
ROOF RIGHTS

300 SQFT
185 SQFT
645 SQFT

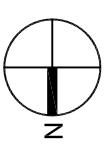


SEDGWICK PROPERTIES

Sedgwick Properties Development Corporation
1525 West Homer Street, Suite 302
Chicago, Illinois 60622

437-443 WEST NORTH AVENUE

EXCLUSIVELY MARKETED BY KOENIG & STREY
CHRIS FEURER & SCOTT GRADEN 312.475.7757



02.24.03

Phone 773.278.4237
Fax 773.278.4247